

10 Highest Value Contracts Awarded in 2022/23

Managed Services for Temporary Agency Resources	£16.0m
Highways Capital Improvement Projects Term Contract	£8.0m
Integrated Specialist Adult Community Substance Misuse Service	£7.0m
Grocery, Dairy, Fruit, Vegetables & Associated Products	£4.0m
Unmetered Electricity	£4.0m
Services to Encourage, Enable & Assist Young People to Participate in Education and Training	£3.8m
Microsoft Enterprise Agreement	£2.6m
Fuel	£1.4m
Leaving Care Support Services	£0.9m
Provision of Domestic Abuse Services – Accommodation	£0.6m

10 Highest Value Contract Extensions in 2022/23

Provision of Domiciliary and Personal Care Services	£5.4m
0 – 19 service	£3.5m
Frozen Food	£1.2m
Services to Encourage, Enable & Assist Young People to Participate in Education and Training	£1.0m
Single Homeless Service	£0.5m
Insurances	£0.5m
Open Spaces - Dynamic Purchasing System (DPS)	£0.5m
Floating Support Service	£0.3m
Road Surface Treatments	£0.3m
Meals for care homes	£0.3m

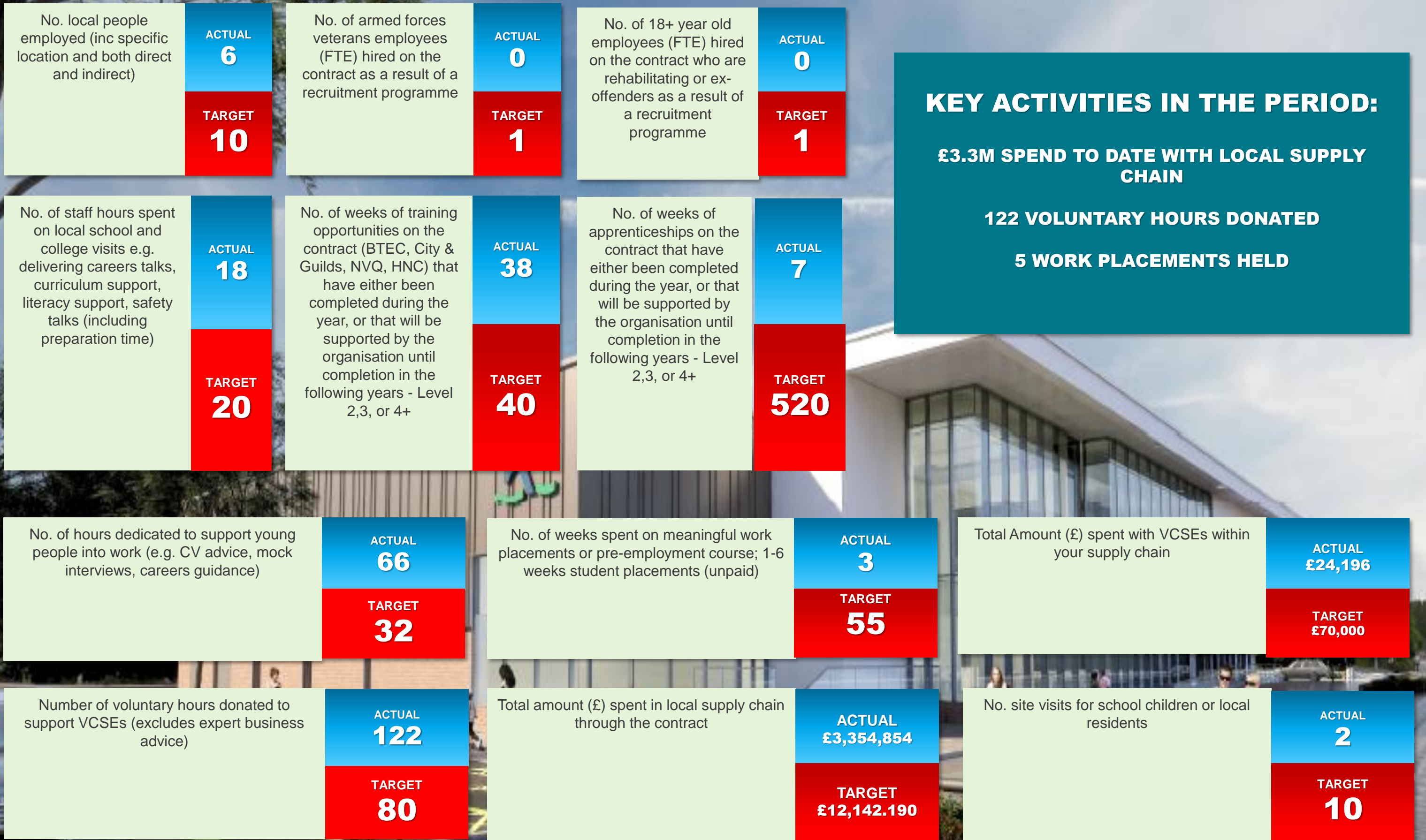
Top 10 Suppliers – 2022/23 Revenue Spend

Matrix SCM Limited	£8.5m
Premier Care Limited	£6.9m
Bridgewater Community Healthcare	£5.7m
Community Integrated Care Ltd	£4.6m
HTP Grange Ltd	£3.9m
Possabilities CIC	£3.5m
Tarmac Trading Limited	£2.6m
NHS Cheshire and Merseyside ICB	£1.9m
EDF Energy	£1.9m
Change, Grow, Live	£1.8m

Top 10 Local Suppliers – 2022/23 Revenue Spend

Community Integrated Care	£4.6m
Anchor Care Homes	£1.5m
Hill Care	£1.3m
Care Concepts Cheshire Ltd.	£0.9m
WSR Recycling	£0.8m
Ashcroft Travel	£0.35m
Woodcrofts Residential Homes	£0.26m
Halton Community Transport	£0.21m
Key Cars (Halton) Ltd.	£0.1m
Seguro Recruitment Limited	£0.1m

SOCIAL VALUE – LEISURE CENTRE CONTRACT



SOCIAL VALUE – OTHER OUTCOMES

Baby Vouchers

As part of work to support new parents with the costs of baby essentials, Halton Housing provided funding for vouchers to cover baby essentials. They are to be distributed by the Children's Centres.

Halton Hospital Outdoor Spaces

Koura Global sent eight staff as part of a team building day to help redevelop the outdoor therapy garden available for the Occupational Therapist unit at Halton Hospital. On top of the volunteering, they paid for some new equipment.

Social Supermarkets

As part of Trevors catering contract with the Council, they donate and deliver stock to the five social supermarkets in the Borough on a quarterly basis. Stock is worth circa £3000 annually.

Care Home – Outdoor Space

As part of Wates Community & Conservation week they sent eight staff to support a local care home to tidy up their outdoor space for the residents to enjoy.

Care Home – Therapeutic Garden

UPS are to create creating a therapeutic outdoor space for residents at Trewan House care home. This will involve the construction of raised flower/vegetable beds for residents to grow their own plants, as well as an outdoor seating area.

As part of this project the home has been linked in with another local provider, that has agreed to provide plants and education sessions about suitable plants for residents

Care Home – Indoor shop / bar

UPS are to create an indoor shop and bar space at Madeline McKenna Care Home.

Christmas Gifts

Wates have agreed to provide Christmas gift donations for care homes, which will help them to raise money for their activity funds for residents.

Donations will also be made to support the Children in Need team with Christmas Hampers for local children.